

SGS



2F, No.240, Sec.1, Nei Hu Road, Taipei, Taiwan 114, R.O.C
No.20 & No.26 (Except 1F, 2F&3F) Free Trade Zone, Shatoujiao,
Shenzhen City, Guangdong Province, China
has been assessed and certified as meeting the requirements of

For the following activities,

Multiple certificates have been issued for this scope
The main certificate is numbered HK07/01191.00

Authorised by

P. Earl



SGS United Kingdom Ltd Systems & Services Certification
Rossmore Business Park Ellesmere Port Cheshire CH65 3EN UK
t +44 (0)151 350-6666 f +44 (0)151 350-6600 www.sgs.com

Page 1 of 1





ISO14001 CERTIFICATE

Certificate No.: 061-04-E1-0065-R1-L

We hereby certify that

ECS MANUFACTURING (SHANZHEN) CO., LTD.

by reason of its

Environmental Management System

has been awarded this certificate for
compliance with the standard

ISO14001:1996

The Environmental Management System
applies in the following area:

ECS MANUFACTURING (SHANZHEN) CO., LTD.
located at No. 20 & 26 (except 1F, 2F), Free Trade Zone,
Shatuojiang, Shenzhen City, Guangdong Province, P. R. China.
is engaged in manufacturing of Mother Board and Peripheral Card,
and interrelated managerial activities.

Date of issue: 28th Sept. 2004

Date of expiry: 27th Sept. 2007

Signed by:



SHENZHEN SOUTHERN CERTIFICATION CO., LTD.

Preface

Copyright

This publication, including all photographs, illustrations and software, is protected under international copyright laws, with all rights reserved. Neither this manual, nor any of the material contained herein, may be reproduced without written consent of the author.

Version 1.0B

Disclaimer

The information in this document is subject to change without notice. The manufacturer makes no representations or warranties with respect to the contents hereof and specifically disclaims any implied warranties of merchantability or fitness for any particular purpose. The manufacturer reserves the right to revise this publication and to make changes from time to time in the content hereof without obligation of the manufacturer to notify any person of such revision or changes.

Trademark Recognition

Microsoft, MS-DOS and Windows are registered trademarks of Microsoft Corp.

MMX, Pentium, Pentium-II, Pentium-III, Celeron are registered trademarks of Intel Corporation.

Other product names used in this manual are the properties of their respective owners and are acknowledged.

Federal Communications Commission (FCC)

This equipment has been tested and found to comply with the limits for a Class B digital device, pursuant to Part 15 of the FCC Rules. These limits are designed to provide reasonable protection against harmful interference in a residential installation. This equipment generates, uses, and can radiate radio frequency energy and, if not installed and used in accordance with the instructions, may cause harmful interference to radio communications. However, there is no guarantee that interference will not occur in a particular installation. If this equipment does cause harmful interference to radio or television reception, which can be determined by turning the equipment off and on, the user is encouraged to try to correct the interference by one or more of the following measures:

- Reorient or relocate the receiving antenna
- Increase the separation between the equipment and the receiver
- Connect the equipment onto an outlet on a circuit different from that to which the receiver is connected
- Consult the dealer or an experienced radio/TV technician for help

Shielded interconnect cables and a shielded AC power cable must be employed with this equipment to ensure compliance with the pertinent RF emission limits governing this device. Changes or modifications not expressly approved by the system's manufacturer could void the user's authority to operate the equipment.

Preface

Declaration of Conformity

This device complies with part 15 of the FCC rules. Operation is subject to the following conditions:

- This device may not cause harmful interference, and
- This device must accept any interference received, including interference that may cause undesired operation

Canadian Department of Communications

This class B digital apparatus meets all requirements of the Canadian Interference-causing Equipment Regulations.

Cet appareil numérique de la classe B respecte toutes les exigences du Règlement sur le matériel brouilleur du Canada.

About the Manual

The manual consists of the following:

Chapter 1 Introducing the Motherboard	Describes features of the motherboard. Go to ➞ page 1
Chapter 2 Installing the Motherboard	Describes installation of motherboard components. Go to ➞ page 7
Chapter 3 Using BIOS	Provides information on using the BIOS Setup Utility. Go to ➞ page 25
Chapter 4 Using the Motherboard Software	Describes the motherboard software Go to ➞ page 41

Preface

TABLE OF CONTENTS

Preface	i
Chapter 1	1
Introducing the Motherboard	1
Introduction.....	1
Feature.....	2
Motherboard Components.....	4
 Chapter 2	 7
Installing the Motherboard	7
Safety Precautions.....	7
Choosing a Computer Case.....	7
Installing the Motherboard in a Case.....	7
Checking Jumper Settings.....	8
<i>Setting Jumpers.....</i>	<i>8</i>
<i>Checking Jumper Settings.....</i>	<i>9</i>
<i>Jumper Settings.....</i>	<i>9</i>
Connecting Case Components.....	10
<i>Front Panel Header.....</i>	<i>12</i>
Installing Hardware.....	13
<i>Installing the Processor.....</i>	<i>13</i>
<i>Installing Memory Modules.....</i>	<i>15</i>
<i>Installing a Hard Disk Drive/CD-ROM/SATA Hard Drive...17</i>	<i>17</i>
<i>Installing a Floppy Diskette Drive.....</i>	<i>18</i>
<i>Installing Add-on Cards.....</i>	<i>19</i>
<i>Connecting Optional Devices.....</i>	<i>22</i>
Connecting I/O Devices.....	24
 Chapter 3	 25
Using BIOS	25
About the Setup Utility.....	25
<i>The Standard Configuration.....</i>	<i>25</i>
<i>Entering the Setup Utility.....</i>	<i>25</i>
<i>Updating the BIOS.....</i>	<i>27</i>
Using BIOS.....	27
<i>Standard CMOS Setup.....</i>	<i>28</i>
<i>Advanced Setup.....</i>	<i>30</i>
<i>Advanced Chipset Setup.....</i>	<i>32</i>

<i>Integrated Peripherals</i>	33
<i>Power Management Setup</i>	34
<i>PCI/PNP Configuration</i>	36
<i>PC Health Status</i>	37
<i>Frequency/Voltage Control</i>	38
<i>Load Optimal Defaults</i>	39
<i>Supervisor Password</i>	39
<i>User Password</i>	40
<i>Save & Exit Setup</i>	40
<i>Exit Without Saving</i>	40

Chapter 4	41
Using the Motherboard Software	41
About the Software CD-ROM.....	41
Auto-installing under Windows 2000/XP.....	41
<i>Running Setup</i>	42
Manual Installation.....	44
Utility Software Reference.....	44

Chapter 1

Introducing the Motherboard

Introduction

Thank you for choosing the 945GCT-M motherboard. This motherboard is a high performance, enhanced function motherboard designed to support the LGA775 socket Intel Core™ 2 Duo/Pentium D/Pentium 4/Celeron D processors for high-end business or personal desktop markets.

The motherboard incorporates the 945GC Northbridge (NB) and ICH7 Southbridge (SB) chipsets. The Northbridge supports a Front Side Bus (FSB) frequency of 1066/800/533 MHz using a scalable FSB Vcc_CPU. The memory controller supports DDR2 memory DIMM frequencies of 667/533/400. It supports two DDR2 Sockets with up to maximum memory of 2 GB. DDR2 Maximum memory bandwidth of 10.7 Gb/s in dual-channel interleaved mode using DDR2 667 MHz. High resolution graphics via two PCI Express slots, intended for Graphics Interface, is fully compliant to the PCI Express Base Specification revision 1.0a.

The ICH7 Southbridge supports two PCI slots which are PCI 2.3 compliant. It implements an EHCI compliant interface that provides 480 Mb/s bandwidth for eight USB 2.0 ports. One onboard IDE connector supports 2 IDE devices in Ultra ATA 100/66/33 mode. The Southbridge integrates a Serial ATA host controller that is SATA 1.0a compliant, supporting four SATA ports with maximum transfer rate up to 3.0 Gb/s each.

The motherboard is equipped with advanced full set of I/O ports in the rear panel, including PS/2 mouse and keyboard connectors, COM1, LPT1(optional), one VGA port, four USB ports, one optional LAN port and audio jacks for microphone, line-in and line-out.

Feature

Processor

The motherboard uses an LGA775 type of Intel Core™ 2 Duo/Pentium D/Pentium 4/Celeron D that carries the following features:

- Accommodates Intel Core™ 2 Duo/Pentium D/Pentium 4/Celeron D processors
- Supports a system bus (FSB) of 1066/800/533 MHz
- Supports “Hyper-Threading” technology CPU

“Hyper-Threading” technology enables the operating system into thinking it’s hooked up to two processors, allowing two threads to be run in parallel, both on separate “logical” processors within the same physical processor.

Chipset

The 945GC Northbridge (NB) and ICH7 Southbridge (SB) chipsets are based on an innovative and scalable architecture with proven reliability and performance.

- | | |
|-------------------|--|
| 945GC (NB) | <ul style="list-style-type: none"> • Supports 32-bit host bus addressing, allowing the CPU to access the entire 2 GB of the memory address space • 2 GB/s point-to-point Direct Media Interface (DMI) to ICH7 (1 Gb/s) each direction • Supports one PCI Express x16 for Graphics Interface, fully compliant to the PCI Express Base Specification revision 1.0a. • Supports 256-Mb, 512-Mb and 1-Gb DDR2 technologies for x8 and x16 devices • Supports high quality 3D setup, Render Engine and high-quality texture engine |
| ICH7 (SB) | <ul style="list-style-type: none"> • Enhanced DMA Controller, interrupt controller, and timer functions • Compliant with PCI Express Base Specification, Revision 1.0a • Compliant with PCI 2.3 specification • Integrated SATA 3.0 Gb/s Host Controller • Integrated USB 2.0 Host Controller supporting up to eight USB 2.0 ports • Integrated IDE controller supports Ultra ATA 100/66/33 |

Memory

- Supports DDR2 667/533/400 DDR SDRAM with Dual-channel architecture
- Accommodates two unbuffered DIMMs
- Up to 1 GB per DIMM with maximum memory size up to 2 GB

Audio

- 5.1 channel High Definition Audio Codec
- All DACs Support 192K/96K/48K/44.1KHz DAC sample rate
- Software selectable 2.5V/3.75V VREFOUT
- Meets Microsoft WHQL/WLP 2.x audio requirements
- Direct Sound 3D™ compatible

Introducing the Motherboard

Onboard LAN (Optional)

The onboard LAN controller provides the following features:

- | |
|--|
| <ul style="list-style-type: none"> • Integrated 10/100/1000 transceiver • Supports PCI v2.3, 32-bit, 33/66 MHz • Supports Wake-On-LAN (WOL) function and remote wake-up |
| <ul style="list-style-type: none"> • Supports 10/100 Mb/s N-Way Auto negotiation operation • Half/Full duplex capacity • Supports Wake-On-LAN (WOL) function and remote wake-up |

Expansion Options

The motherboard comes with the following expansion options:

- Two PCI Express slots for Graphic Interface
- Two 32-bit PCI v2.3 compliant slots
- One IDE connector that supports two IDE devices
- One floppy disk drive interface
- Four 7-pin SATA connectors

The motherboard supports UDMA bus mastering with transfer rates of 100/66/33 Mb/s.

Integrated I/O

The motherboard has a full set of I/O ports and connectors:

- Two PS/2 ports for mouse and keyboard
- One serial port
- One parallel port (optional)
- One VGA port
- Four USB ports
- One LAN port (optional)
- Audio jacks for microphone, line-in and line-out

BIOS Firmware

This motherboard uses AMI BIOS that enables users to configure many system features including the following:

- Power management
- Wake-up alarms
- CPU parameters
- CPU and memory timing

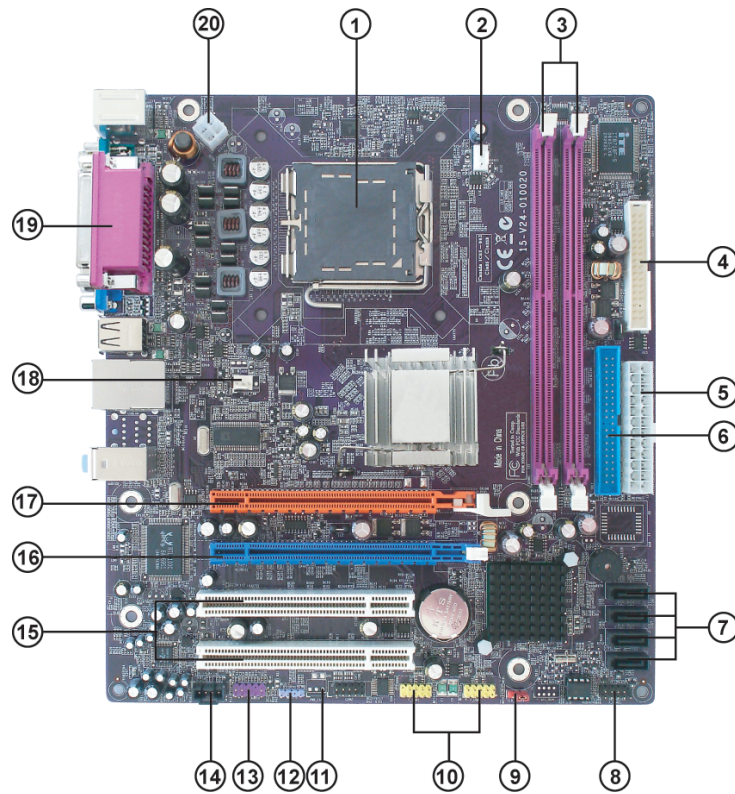
The firmware can also be used to set parameters for different processor clock speeds.



Some hardware specifications and software items are subject to change without prior notice.

Introducing the Motherboard

Motherboard Components



Introducing the Motherboard

Table of Motherboard Components

LABEL	COMPONENTS
1. CPU Socket	LGA775 socket for Intel Core™ 2 Duo/Pentium D/Pentium 4/Celeron D CPUs
2. CPU_FAN	CPU cooling fan connector
3. DIMM1/3	240-pin DDR2 SDRAM slots
4. FDD	Floppy disk drive connector
5. ATX1	Standard 24-pin ATX power connector
6. IDE1	Primary IDE connector
7. SATA1~4	Serial ATA connectors
8. F_PANEL	Front panel switch/LED header
9. CLR_CMOS1	Clear CMOS jumper
10. F_USB1~2	Front Panel USB headers
11. PWR_FAN*	Power cooling fan connector
12. SPDIFO	SPDIF out header
13. F_AUDIO	Front panel audio header
14. CD_IN	Analog audio input connector
15. PCI1~2	32-bit add-on card slots
16. PCIEX4	PCI Express Lite for graphics interface
17. PCIEX16	PCI Express slot for graphics interface
18. SYS_FAN	System cooling fan connector
19. LPT1*	Print port
20. ATX12V	Auxiliary 4-pin power connector

“*” stands for optional components.

This concludes Chapter 1. The next chapter explains how to install the motherboard.

Introducing the Motherboard

Memo

Introducing the Motherboard

Chapter 2

Installing the Motherboard

Safety Precautions

- Follow these safety precautions when installing the motherboard
- Wear a grounding strap attached to a grounded device to avoid damage from static electricity
- Discharge static electricity by touching the metal case of a safely grounded object before working on the motherboard
- Leave components in the static-proof bags they came in
- Hold all circuit boards by the edges. Do not bend circuit boards

Choosing a Computer Case

There are many types of computer cases on the market. The motherboard complies with the specifications for the Micro ATX system case. First, some features on the motherboard are implemented by cabling connectors on the motherboard to indicators and switches on the system case. Make sure that your case supports all the features required. Secondly, this motherboard supports one or two floppy diskette drives and two enhanced IDE drives. Make sure that your case has sufficient power and space for all drives that you intend to install.

Most cases have a choice of I/O templates in the rear panel. Make sure that the I/O template in the case matches the I/O ports installed on the rear edge of the motherboard.

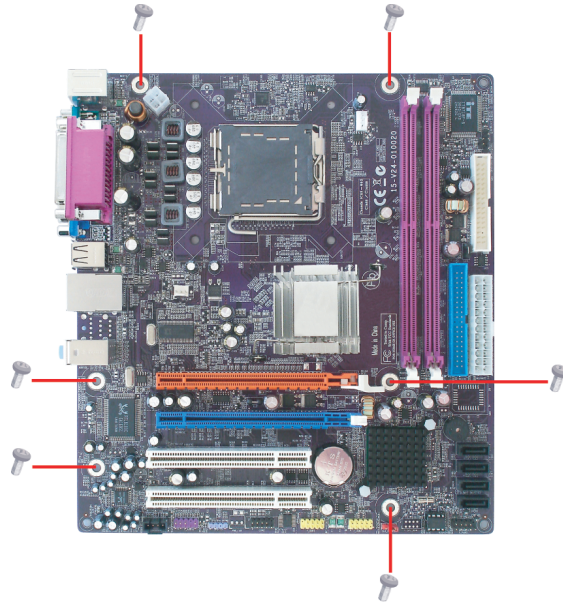
This motherboard carries a Micro ATX form factor of 244 x 220 mm. Choose a case that accommodates this form factor.

Installing the Motherboard in a Case

Refer to the following illustration and instructions for installing the motherboard in a case.

Most system cases have mounting brackets installed in the case, which correspond the holes in the motherboard. Place the motherboard over the mounting brackets and secure the motherboard onto the mounting brackets with screws.

Ensure that your case has an I/O template that supports the I/O ports and expansion slots on your motherboard.



Do not over-tighten the screws as this can stress the motherboard.

Checking Jumper Settings

This section explains how to set jumpers for correct configuration of the motherboard.

Setting Jumpers

Use the motherboard jumpers to set system configuration options. Jumpers with more than one pin are numbered. When setting the jumpers, ensure that the jumper caps are placed on the correct pins.

The illustrations show a 2-pin jumper. When the jumper cap is placed on both pins, the jumper is **SHORT**. If you remove the jumper cap, or place the jumper cap on just one pin, the jumper is **OPEN**.

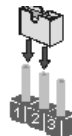


SHORT



OPEN

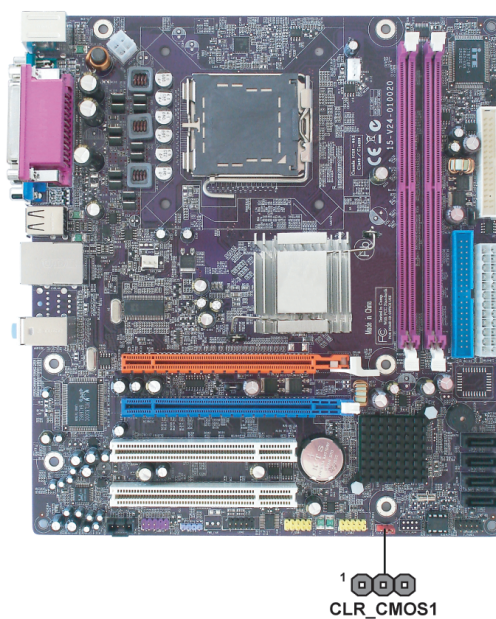
This illustration shows a 3-pin jumper. Pins 1 and 2 are **SHORT**.




Installing the Motherboard

Checking Jumper Settings

The following illustration shows the location of the motherboard jumpers. Pin 1 is labeled.



Jumper Settings

Jumper	Type	Description	Setting (default)	
CLR_CMOS1	3-pin	Clear CMOS	1-2: Clear CMOS 2-3: Normal Before clearing the CMOS, make sure to turn off the system.	 1 CLR_CMOS1



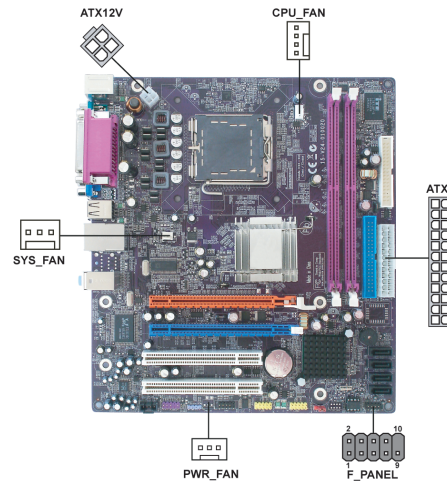
To avoid the system instability after clearing CMOS, we recommend users to enter the main BIOS setting page to “Load Optimal Defaults” and then “Save Changes and Exit”.

Installing the Motherboard

Connecting Case Components

After you have installed the motherboard into a case, you can begin connecting the motherboard components. Refer to the following:

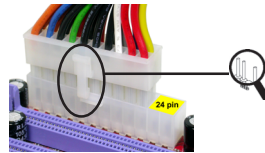
- 1 Connect the CPU cooling fan cable to **CPU_FAN**.
- 2 Connect the system cooling fan connector to **SYS_FAN**.
- 3 Connect the case switches and indicator LEDs to the **F_PANEL**.
- 4 Connect the standard power supply connector to **ATX1**.
- 5 Connect the auxiliary case power supply connector to **ATX12V**.
- 6 Connect the power fan connector to **PWR_FAN** (optional).



Connecting 20/24-pin power cable

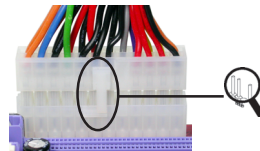


Users please note that the 20-pin and 24-pin power cables can both be connected to the ATX1 connector. With the 20-pin power cable, just align the 20-pin power cable with the pin 1 of the ATX1 connector. However, using 20-pin power cable may cause the system to become unbootable or unstable because of insufficient electricity. A minimum power of 300W is recommended for a fully-configured system.



20-pin power cable

With ATX v1.x power supply, users please note that when installing 20-pin power cable, the latch of power cable falls on the left side of the ATX1 connector latch, just as the picture shows.



24-pin power cable

With ATX v2.x power supply, users please note that when installing 24-pin power cable, the latches of power cable and the ATX1 match perfectly.

Installing the Motherboard

CPU_FAN: FAN Power Connector

Pin	Signal Name	Function
1	GND	System Ground
2	+12V	Power +12V
3	Sense	Sensor
4	Control	CPU FAN control



Users please note that the fan connector supports the CPU cooling fan of 1.1A ~ 2.2A (26.4W max) at +12V.

SYS_FAN: System Cooling FAN Power Connector

Pin	Signal Name	Function
1	GND	System Ground
2	+12V	Power +12V
3	Sense	Sensor

ATX1: ATX 24-pin Power Connector

Pin	Signal Name	Pin	Signal Name
1	+3.3V	13	+3.3V
2	+3.3V	14	-12V
3	Ground	15	Ground
4	+5V	16	PS_ON
5	Ground	17	Ground
6	+5V	18	Ground
7	Ground	19	Ground
8	PWRGD	20	-5V
9	+5VSB	21	+5V
10	+12V	22	+5V
11	+12V	23	+5V
12	+3.3V	24	Ground

ATX12V: ATX 12V Power Connector

Pin	Signal Name
1	Ground
2	Ground
3	+12V
4	+12V

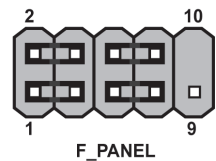
PWR_FAN: FAN Power Connector (optional)

Pin	Signal Name	Function
1	GND	System Ground
2	+12V	Power +12V
3	NC	Not connect

Installing the Motherboard

Front Panel Header

The front panel header (F_PANEL) provides a standard set of switch and LED headers commonly found on ATX or Micro ATX cases. Refer to the table below for information:



Pin	Signal	Function	Pin	Signal	Function
1	HD_LED_P	Hard disk LED(+)	2	FP PWR/SLP	*MSG LED(+)
3	HD_LED_N	Hard disk LED(-)	4	FP PWR/SLP	*MSG LED(-)
5	RST_SW_N	Reset Switch(-)	6	PWR_SW_P	Power Switch(+)
7	RST_SW_P	Reset Switch(+)	8	PWR_SW_N	Power Switch(-)
9	RSVD	Reserved	10	Key	No pin

* MSG LED (dual color or single color)

Hard Drive Activity LED

Connecting pins 1 and 3 to a front panel mounted LED provides visual indication that data is being read from or written to the hard drive. For the LED to function properly, an IDE drive should be connected to the onboard IDE interface. The LED will also show activity for devices connected to the SCSI (hard drive activity LED) connector.

Power/Sleep/Message waiting LED

Connecting pins 2 and 4 to a single or dual-color, front panel mounted LED provides power on/off, sleep, and message waiting indication.

Reset Switch

Supporting the reset function requires connecting pin 5 and 7 to a momentary-contact switch that is normally open. When the switch is closed, the board resets and runs POST.

Power Switch

Supporting the power on/off function requires connecting pins 6 and 8 to a momentary-contact switch that is normally open. The switch should maintain contact for at least 50 ms to signal the power supply to switch on or off. The time requirement is due to internal de-bounce circuitry. After receiving a power on/off signal, at least two seconds elapses before the power supply recognizes another on/off signal.

Installing the Motherboard

Installing Hardware

Installing the Processor



Caution: When installing a CPU heatsink and cooling fan make sure that you DO NOT scratch the motherboard or any of the surface-mount resistors with the clip of the cooling fan. If the clip of the cooling fan scrapes across the motherboard, you may cause serious damage to the motherboard or its components.

On most motherboards, there are small surface-mount resistors near the processor socket, which may be damaged if the cooling fan is carelessly installed.

Avoid using cooling fans with sharp edges on the fan casing and the clips. Also, install the cooling fan in a well-lit work area so that you can clearly see the motherboard and processor socket.

Before installing the Processor

This motherboard has a LGA775 socket. When choosing a processor, consider the performance requirements of the system. Performance is based on the processor design, the clock speed and system bus frequency of the processor, and the quantity of internal cache memory and external cache memory.

This motherboard automatically determines the CPU clock frequency and system bus frequency for the processor. You may be able to change these settings by making changes to jumpers on the motherboard, or changing the settings in the system Setup Utility. We strongly recommend that you do not over-clock processors or other components to run faster than their rated speed.



Warning: Over-clocking components can adversely affect the reliability of the system and introduce errors into your system. Over-clocking can permanently damage the motherboard by generating excess heat in components that are run beyond the rated limits.

Fail-Safe Procedures for Over-clocking

When end-users encounter failure after attempting over-clocking, please take the following steps to recover from it.

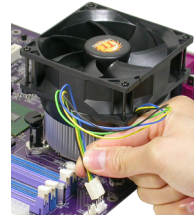
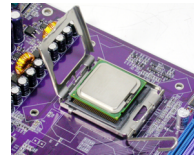
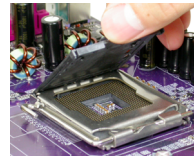
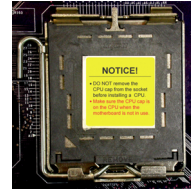
1. Shut down the computer.
2. Press and hold the “Page Up Key (PgUp)” of the keyboard, and then boot the PC up.
3. Two seconds after the PC boots up, release the “Page Up Key (PgUp)”.
4. The BIOS returns to the default setting by itself.

Installing the Motherboard

CPU Installation Procedure

The following illustration shows CPU installation components.

- A. Read and follow the instructions shown on the sticker on the CPU cap.
- B. Unload the cap
 - Use thumb & forefinger to hold the lifting tab of the cap.
 - Lift the cap up and remove the cap completely from the socket.
- C. Open the load plate
 - Use thumb & forefinger to hold the hook of the lever, pushing down and pulling aside unlock it.
 - Lift up the lever.
 - Use thumb to open the load plate. Be careful not to touch the contacts.
- D. Install the CPU on the socket
 - Orientate CPU package to the socket. Make sure you match triangle marker to pin 1 location.
- E. Close the load plate
 - Slightly push down the load plate onto the tongue side, and hook the lever.
 - CPU is locked completely.
- F. Apply thermal grease on top of the CPU.
- G. Fasten the cooling fan supporting base onto the CPU socket on the motherboard.
- H. Make sure the CPU fan is plugged to the CPU fan connector. Please refer to the CPU cooling fan user's manual for more detail installation procedure.



1. To achieve better airflow rates and heat dissipation, we suggest that you use a high quality fan with 3800 rpm at least. CPU fan and heatsink installation procedures may vary with the type of CPU fan/heatsink supplied. The form and size of fan/heatsink may also vary.
2. DO NOT remove the CPU cap from the socket before installing a CPU.
3. Return Material Authorization (RMA) requests will be accepted only if the motherboard comes with the cap on the LGA775 socket.

Installing the Motherboard

Installing Memory Modules

This motherboard accommodates two memory modules. It can support two 240-pin DDR2 667/533/400. The total memory capacity is 2 GB.

DDR2 SDRAM memory module table

Memory module	Memory Bus
DDR2 400	200 MHz
DDR2 533	266 MHz
DDR2 667	333 MHz

You must install at least one module in any of the two slots. Each module can be installed with 256 MB to 1 GB of memory; total memory capacity is 2 GB.

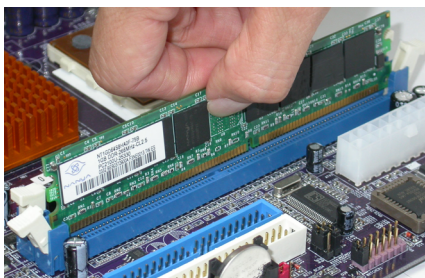


Do not remove any memory module from its antistatic packaging until you are ready to install it on the motherboard. Handle the modules only by their edges. Do not touch the components or metal parts. Always wear a grounding strap when you handle the modules.

Installation Procedure

Refer to the following to install the memory modules.

- 1 This motherboard supports unbuffered DDR2 SDRAM .
- 2 Push the latches on each side of the DIMM slot down.
- 3 Align the memory module with the slot. The DIMM slots are keyed with notches and the DIMMs are keyed with cutouts so that they can only be installed correctly.
- 4 Check that the cutouts on the DIMM module edge connector match the notches in the DIMM slot.
- 5 Install the DIMM module into the slot and press it firmly down until it seats correctly. The slot latches are levered upwards and latch on to the edges of the DIMM.
- 6 Install any remaining DIMM modules.



Installing the Motherboard

Table A: DDR2 (memory module) QVL (Qualified Vendor List)

The following DDR2 667/533/400 memory modules have been tested and qualified for use with this motherboard.

Type	Size	Vendor	Module Name
DDR2 400	512 M B	TwinMos	msung K4T51083QB-GCC
		Corsair	Aeneon AET94F-370
		Corsair	VC256MB533D2 4PB11D9CHM
DDR2 533	256 M B	Elpida	E2508AA-DF-E
		Hynix	HY5PS121621
		Kingston	Elpida E5116F-5C-E
		Kingmax	Hynix HY5PS121621
		Kingston	Infineon HYB18T512260AF-3.7
		Nanya	NT5TU32M16AG-37B
		Ramaxel	Elpida E5116AF-5C-E
		Ramaxel	5PB42 D9DCD
		Aeneon	AET93F370
		Aeneon	AET94F370
	512 M B	Corsair	Samsung K4T51083QB-ZCD5
		Elpida	04180WB01
		Hynix	HY5PS12821
		Infineon	HY818T512800AF37 33346778
		Kingston	Hynix HYB18T512800AF37
		Kingston	Hynix HY5PS12821
		PQI	PQIPQB2648D38R0701
		Ramaxel	PC2-4200U-444 LF 6AD11 D96CT
		Ramaxel	5PB32 D9DCN
		Samsung	K4T51083QC
		Samsung	K4T51083QF-ZCD5
	1 G B	Twinmos	Elpida E5108AB-5C-E
		Apacer	Elpida E5108AB-5C-E
		Geil	A016E2864T2AG8AKT5H120001
		Infineon	HY818T512800AF37 33344539
		Kingmax	KKEA88E4AAKG-37
		PQI	PQIPQB2648D38R0651
		UMAX	U2S12D30TP-5C
		Infineon	HYS64T325001HU-3-A
		Ramxel	HYB18T256
		Ramxel	5NB31 D9DCG
DDR2 667	256 M B	A-DATA	AD29608A88-3EG
		Corsair	Corsair K4T5108QC
		Corsair	VALUESELECT 32M8CEC
		GEIL	GEIL GL2L64M088BA30AW
		GEIL	GL2L64M088BA18W
		Ramxel	5LB31 D9DCL
		Samsung	K4T51083QC
		Sync	Max 04400WB01 R050008A
		Transcend	JetRam J12Q3AB-6
		Transcend	SEL520ZCE6 K4T51083QC
	512 M B	Twinmos	TMM6208G8M30B
		Apacer	Elpida AM4B5708GEWS7E-0637F
		Infineon	HYB18T51512800BF3S
		PQI	PQIPQB2648D38R0648
		Samsung	K4T51083QC
		UMAX	U2S12030TP-6E TBF614-L93G

Installing a Hard Disk Drive/CD-ROM/SATA Hard Drive

This section describes how to install IDE devices such as a hard disk drive and a CD-ROM drive.

About IDE Devices

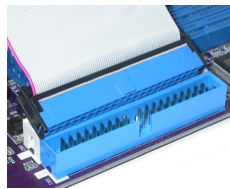
Your motherboard has one IDE channel interface. An IDE ribbon cable supporting two IDE devices is bundled with the motherboard.



You must orient the cable connector so that the pin1 (color) edge of the cable corresponds to the pin 1 of the I/O port connector.

IDE1: IDE Connector

This motherboard supports four high data transfer SATA ports with each runs up to 3.0 Gb/s. To get better system performance, we recommend users connect the CD-ROM to the IDE channel, and set up the hard drives on the SATA ports.



IDE devices enclose jumpers or switches used to set the IDE device as MASTER or SLAVE. Refer to the IDE device user's manual. Installing two IDE devices on one cable, ensure that one device is set to MASTER and the other device is set to SLAVE. The documentation of your IDE device explains how to do this.

About SATA Connectors

Your motherboard features four SATA connectors supporting a total of four drives. SATA refers to Serial ATA (Advanced Technology Attachment) is the standard interface for the IDE hard drives which are currently used in most PCs. These connectors are well designed and will only fit in one orientation. Locate the SATA connectors on the motherboard and follow the illustration below to install the SATA hard drives.

Installing Serial ATA Hard Drives

To install the Serial ATA (SATA) hard drives, use the SATA cable that supports the Serial ATA protocol. This SATA cable comes with an SATA power cable. You can connect either end of the SATA cable to the SATA hard drive or the connector on the motherboard.



SATA cable (optional)

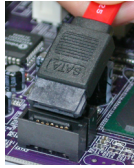


SATA power cable (optional)

Installing the Motherboard

Refer to the illustration below for proper installation:

- 1 Attach either cable end to the connector on the motherboard.
- 2 Attach the other cable end to the SATA hard drive.
- 3 Attach the SATA power cable to the SATA hard drive and connect the other end to the power supply.



This motherboard does not support the “Hot-Plug” function.

Installing a Floppy Diskette Drive

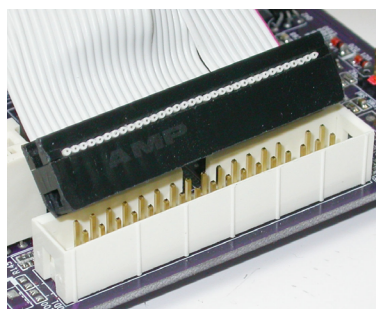
The motherboard has a floppy diskette drive (FDD) interface and ships with a diskette drive ribbon cable that supports one or two floppy diskette drives. You can install a 5.25-inch drive and a 3.5-inch drive with various capacities. The floppy diskette drive cable has one type of connector for a 5.25-inch drive and another type of connector for a 3.5-inch drive.



You must orient the cable connector so that the pin 1 (color) edge of the cable corresponds to the pin 1 of the I/O port connector.

FDD: Floppy Disk Connector

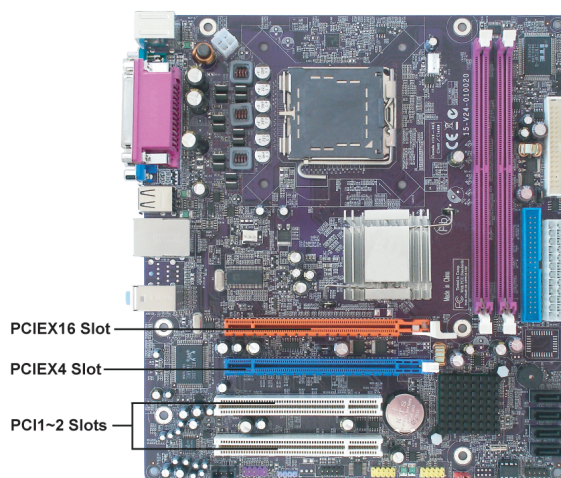
This connector supports the provided floppy drive ribbon cable. After connecting the single end to the onboard floppy connector, connect the remaining plugs on the other end to the floppy drives correspondingly.



Installing the Motherboard

Installing Add-on Cards

The slots on this motherboard are designed to hold expansion cards and connect them to the system bus. Expansion slots are a means of adding or enhancing the motherboard's features and capabilities. With these efficient facilities, you can increase the motherboard's capabilities by adding hardware that performs tasks that are not part of the basic system.



- PCIEX16 Slot** The PCI Express slot is used to install an external PCI Express graphics card that is fully compliant to the PCI Express Base Specification revision 1.0a.
- PCIEX4 Lite** The PCI Express Lite is used to install an external PCI Express graphics card that is fully compliant to the PCI Express Base Specification revision 1.0a.
- PCI 1~2 Slots** This motherboard is equipped with two standard PCI slots. PCI stands for Peripheral Component Interconnect and is a bus standard for expansion cards, which for the most part, is a supplement of the older ISA bus standard. The PCI slots on this board are PCI v2.3 compliant.

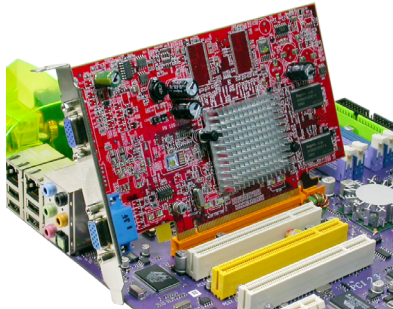


Before installing an add-on card, check the documentation for the card carefully. If the card is not Plug and Play, you may have to manually configure the card before installation.

Installing the Motherboard

Follow these instructions to install an add-on card:

- 1 Remove a blanking plate from the system case corresponding to the slot you are going to use.
- 2 Install the edge connector of the add-on card into the expansion slot. Ensure that the edge connector is correctly seated in the slot.
- 3 Secure the metal bracket of the card to the system case with a screw.




-  1. For some add-on cards, for example graphics adapters and network adapters, you have to install drivers and software before you can begin using the add-on card.
2. The onboard PCI interface does not support 64-bit SCSI cards.

Table B: Supported PCI Express VGA Card List for PCI Express Slot (PCI Express x4)

VGA Chip	Model Name
ATI	ASUS EAX1900XT 512MB
	ASUS EAX1950XTX 512MB
	ASUS X800XT 256MB
	ASUS X850XT PE 246MB
	ATI X1600XT 256M
	Colorful X300SE 128MB
	GIGABYTE X700PRO128MB
	MSI RX550 256MB
	MSI X1300 256MB
NVIDIA	Albatron 256MB7600GT 256M
	ASUS EN7600GS 512MB
	BITC 6200TC 16MB
	ELSA 6600GT 128MB
	GEFORCE 7300GS128MB
	GEFORCE 6600LE 256MB
	GIGABYTE GV-NX73TC512DL-RH
	GF7300GS 512MB
	GIGABYTE 6200 128MB
	Leadtek 6800 Ultra 256MB
	NVIDIA PV5300 128MB
	NVIDIA PCX5750 128MB
	PtrelView PV-N70GXE 256MB
	Winfast PX6500 128MB
	Winfast PX6600GT128MB
	Winfast 6800GS 256MB
	Winfast PX7900GT 256MB

Installing the Motherboard

Surround Display

Function	Init Display First	Onboard VGA	PCI-E x16	PCI-E x4	Test Result
Install WinXP	PCI-E Card	o	x	x	pass
	PCI-E Card	x	o	x	pass
	PCI-E Card	x	x	o	pass
	PCI-E Card	o	x	o	pass
	Onboard VGA	o	x	o	Not support
	PCI-E Card	x	o	o	Not support



1. When the driver of onboard VGA is installed first, the primary Graphics in Windows will be onboard VGA. However, if the driver of add-on PCI Express Graphics card is installed first, the primary Graphics in Windows will be add-on PCI Express Graphics card.
2. If you install the add-on PCI Express VGA card, BIOS setup will automatically disable the onboard VGA after loading optimal defaults. To enable the Surround Display function, make sure to manually enable onboard VGA in the BIOS setting.
3. When using surround display, please make sure that "Init Display First" in "CMOS Setup Utility" should be selected to "Onboard VGA".

ADD2 Card Function

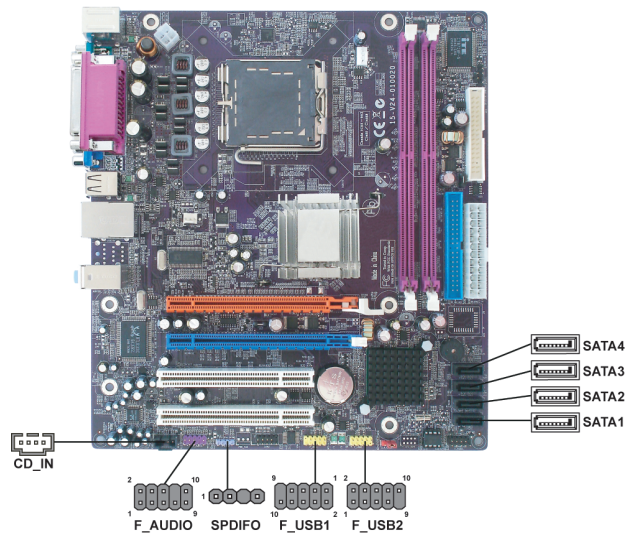
When you want to perform dual view (clone) function, only the following assemble supports.

Function	PCI-E x16	PCI-E x4	Test Result	Remark
Dual View (Clone)	o	x	pass	

Installing the Motherboard

Connecting Optional Devices

Refer to the following for information on connecting the motherboard's optional devices:



F_AUDIO: Front Panel Audio header

This header allows the user to install auxiliary front-oriented microphone and line-out ports for easier access.

Pin	Signal Name	Function
1	AUD_MIC	Front Panel Microphone input signal
2	AUD_GND	Ground used by Analog Audio Circuits
3	MIC_BIAS	Microphone Power
4	AUD_VCC	Filtered +5V used by Analog Audio Circuits
5	AUD_F_R	Right Channel audio signal to Front Panel
6	AUD_RET_R	Right Channel Audio signal to Return from Front Panel
7	REVD	Reserved
8	Key	No Pin
9	AUD_F_L	Left Channel Audio signal to Front Panel
10	AUD_RET_L	Left Channel Audio signal to Return from Front Panel

CD_IN: Analog Audio Input connector

Pin	Signal Name	Function
1	CD_L	CD In right channel
2	GND	Ground
3	GND	Ground
4	CD_R	CD In left channel

Installing the Motherboard

SATA1/2/3/4: Serial ATA connectors

These connectors are used to support the new Serial ATA devices for the highest data transfer rates (3.0 Gb/s), simpler disk drive cabling and easier PC assembly. It eliminates limitations of the current Parallel ATA interface. But maintains register compatibility and software compatibility with Parallel ATA.

Pin	Signal Name	Pin	Signal Name
1	Ground	2	TX+
3	TX-	4	Ground
5	RX-	6	RX+
7	Ground	-	-

F_USB1/2: Front Panel USB headers

The motherboard has four USB ports installed on the rear edge I/O port array. Additionally, some computer cases have USB ports at the front of the case. If you have this kind of case, use auxiliary USB connector to connect the front-mounted ports to the motherboard.

Pin	Signal Name	Function
1	USBPWR	Front Panel USB Power
2	USBPWR	Front Panel USB Power
3	USB_FP_P0-	USB Port 0 Negative Signal
4	USB_FP_P1-	USB Port 1 Negative Signal
5	USB_FP_P0+	USB Port 0 Positive Signal
6	USB_FP_P1+	USB Port 1 Positive Signal
7	GND	Ground
8	GND	Ground
9	Key	No pin
10	USB_FP_OC0	Overcurrent signal



Please make sure that the USB cable has the same pin assignment as indicated above. A different pin assignment may cause damage or system hang-up.

SPDIFO: SPDIF out header

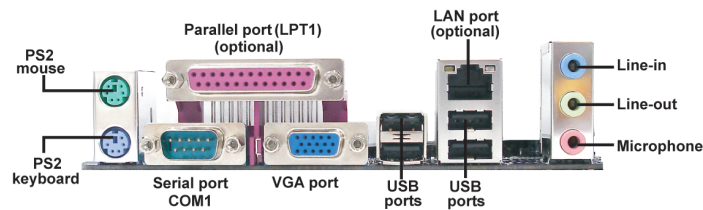
This is an optional header that provides an SPDIFO (Sony/Philips Digital Interface) output to digital multimedia device through optical fiber or coaxial connector.

Pin	Signal Name
1	SPDIFOUT
2	+5V
3	Key
4	GND

Installing the Motherboard

Connecting I/O Devices

The backplane of the motherboard has the following I/O ports:



PS2 Mouse	Use the upper PS/2 port to connect a PS/2 pointing device.
PS2 Keyboard	Use the lower PS/2 port to connect a PS/2 keyboard.
Parallel Port (LPT1) (optional)	Use LPT1 to connect printers or other parallel communications devices.
Serial Port (COM1)	Use the COM port to connect serial devices such as mice or fax/modems. COM1 is identified by the system as COM1/3.
VGA Port	Connect your monitor to the VGA port.
LAN Port (optional)	Connect an RJ-45 jack to the LAN port to connect your computer to the Network.
USB Ports	Use the USB ports to connect USB devices.
Audio Ports (optional)	Use the three audio jacks to connect audio devices. The first jack is for stereo line-in signal. The second jack is for stereo line-out signal. The third jack is for microphone.

This concludes Chapter 2. The next chapter covers the BIOS.

Installing the Motherboard

Chapter 3

Using BIOS

About the Setup Utility

The computer uses the latest “American Megatrends Inc.” BIOS with support for Windows Plug and Play. The CMOS chip on the motherboard contains the ROM setup instructions for configuring the motherboard BIOS.

The BIOS (Basic Input and Output System) Setup Utility displays the system’s configuration status and provides you with options to set system parameters. The parameters are stored in battery-backed-up CMOS RAM that saves this information when the power is turned off. When the system is turned back on, the system is configured with the values you stored in CMOS.

The BIOS Setup Utility enables you to configure:

- Hard drives, diskette drives and peripherals
- Video display type and display options
- Password protection from unauthorized use
- Power Management features

The settings made in the Setup Utility affect how the computer performs. Before using the Setup Utility, ensure that you understand the Setup Utility options.

This chapter provides explanations for Setup Utility options.

The Standard Configuration

A standard configuration has already been set in the Setup Utility. However, we recommend that you read this chapter in case you need to make any changes in the future.

This Setup Utility should be used:

- when changing the system configuration
- when a configuration error is detected and you are prompted to make changes to the Setup Utility
- when trying to resolve IRQ conflicts
- when making changes to the Power Management configuration
- when changing the password or making other changes to the Security Setup

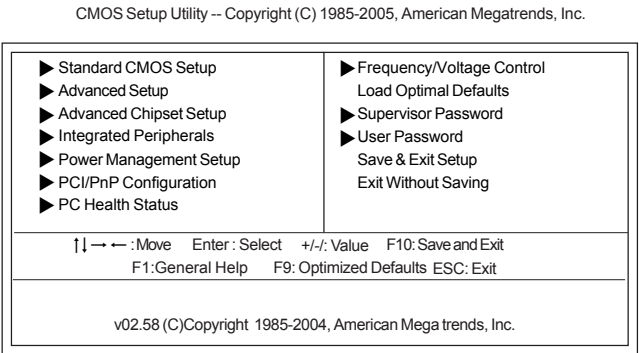
Entering the Setup Utility

When you power on the system, BIOS enters the Power-On Self Test (POST) routines. POST is a series of built-in diagnostics performed by the BIOS. After the POST routines are completed, the following message appears:

Using BIOS

Press DEL to enter SETUP

Press the delete key to access the BIOS Setup Utility.



BIOS Navigation Keys

The BIOS navigation keys are listed below:

KEY	FUNCTION
ESC	Exits the current menu
↑↓←→	Scrolls through the items on a menu
+/-/PU/PD	Modifies the selected field's values
Enter	Select
F9	Loads an optimized setting for better performance
F10	Saves the current configuration and exits setup
F1	Displays a screen that describes all key functions

Using BIOS

Updating the BIOS

You can download and install updated BIOS for this motherboard from the manufacturer's Web site. New BIOS provides support for new peripherals, improvements in performance, or fixes for known bugs. Install new BIOS as follows:

- 1 Create a bootable system disk. (Refer to Windows online help for information on creating a bootable system disk.)
- 2 Download the Flash Utility and new BIOS file from the manufacturer's Web site. Copy these files to the system diskette you created in Step 1.
- 3 Turn off your computer and insert the system diskette in your computer's diskette drive. (You might need to run the Setup Utility and change the boot priority items on the Advanced BIOS Features Setup page, to force your computer to boot from the floppy diskette drive first.)
- 4 At the A:\ prompt, type the Flash Utility program name and the file name of the new bios and then press <Enter>. Example: AMINF340.EXE 040706.ROM
- 5 When the installation is complete, remove the floppy diskette from the diskette drive and restart your computer. If your motherboard has a Flash BIOS jumper, reset the jumper to protect the newly installed BIOS from being overwritten. The computer will restart automatically.

Using BIOS

When you start the Setup Utility, the main menu appears. The main menu of the Setup Utility displays a list of the options that are available. A highlight indicates which option is currently selected. Use the cursor arrow keys to move the highlight to other options. When an option is highlighted, execute the option by pressing <Enter>.

Some options lead to pop-up dialog boxes that prompt you to verify that you wish to execute that option. Other options lead to dialog boxes that prompt you for information.

Some options (marked with a triangle ►) lead to submenus that enable you to change the values for the option. Use the cursor arrow keys to scroll through the items in the submenu.

In this manual, default values are enclosed in parenthesis. Submenu items are denoted by a triangle ►.

Using BIOS

Standard CMOS Setup

This option displays basic information about your system.

CMOS Setup Utility - Copyright (C) 1985-2005, American Megatrends, Inc.
Standard CMOS Setup

System Date	Sun, 01/ 01/2006	Help Item
System Time	00:09:48	
▶ Primary IDE Master	Not Detected	Use [ENTER], [TAB] or [SHIFT-TAB] TO select a field. Use [+] or [-] to configure system Date.
▶ Primary IDE Slave	Not Detected	
▶ Secondary IDE Master	Not Detected	
▶ Secondary IDE Slave	Not Detected	
▶ Third IDE Master	Hard Disk	
▶ Third IDE Slave	ATAPI CDROM	
IDE BusMaster	Enabled	
Floppy A	1.44 MB 3 1/2"	

↑↓ → ←: Move Enter: Select +/-: Value F10: Save and Exit
F1: General Help F9: Optimized Defaults ESC: Exit

System Date and Time

The Date and Time items show the current date and time on the computer. If you are running a Windows OS, these items are automatically updated whenever you make changes to the Windows Date and Time Properties utility.

▶ Primary/Secondary/Third IDE Master/Slave

Your computer has one IDE channels and each channel can be installed with one or two devices (Master and Slave). In addition, this motherboard supports four SATA channels and each channel allows one SATA device to be installed. Use these items to configure each device on the IDE channel.

CMOS Setup Utility - Copyright (C) 1985-2005, American Megatrends, Inc.
Primary IDE Master

Primary IDE Master		Help Item
Device	: Not Detected	
Type	Auto	Select the type of device connected to the system.
LBA/Large Mode	Auto	
Block (Multi-Sector Transfer)	Auto	
PIO Mode	Auto	
DMA Mode	Auto	
S.M.A.R.T.	Auto	
32 Bit Data Transfer	Disabled	

↑↓ → ←: Move Enter: Select +/-: Value F10: Save and Exit
F1: General Help F9: Optimized Defaults ESC: Exit

Type (Auto)

Use this item to configure the type of the IDE device that you specify. If the feature is enabled, it will enhance hard disk performance by reading or writing more data during each transfer.

LBA/Large Mode (Auto)

Use this item to set the LAB/Large mode to enhance hard disk performance by optimizing the area the hard disk is visited each time.

Block (Multi-Sector Transfer) (Auto)

If the feature is enabled, it will enhance hard disk performance by reading or writing more data during each transfer.

PIO Mode (Auto)

Use this item to set the PIO mode to enhance hard disk performance by optimizing the hard disk timing.

DMA Mode (Auto)

DMA capability allows user to improve the transfer-speed and data-integrity for compatible IDE devices.

S.M.A.R.T. (Auto)

The S.M.A.R.T. (Self-Monitoring, Analysis and Reporting Technology) system is a diagnostics technology that monitors and predicts device performance. S.M.A.R.T. software resides on both the disk drive and the host computer.

32Bit Data Transfer (Disabled)

Use this item to set the onboard SATA-IDE channel to be disabled, IDE, or RAID.

Press <Esc> to return to the Standard CMOS Setup page.

IDE BusMaster (Enabled)

This item enables or disables the DMA under DOS mode. We recommend you to leave this item at the default value.

Floppy A/ (144 MB 3 $\frac{1}{2}$ ")

These items set up size and capacity of the floppy diskette drive(s) installed in the system.

Press <Esc> to return to the main menu setting page.

Advanced Setup

This page sets up more advanced information about your system. Handle this page with caution. Any changes can affect the operation of your computer.

CMOS Setup Utility - Copyright (C) 1985-2005, American Megatrends, Inc.
Advanced Setup

CPU TM function	Enabled	Help Item Include ACPI APIC table pointer to RSDT pointer list.
Max CPUID Value Limit	Disabled	
Execute Disable Bit	Enabled	
Quick Power on Self Test	Enabled	
Boot Up Numlock Status	On	
APIC Mode	Enabled	
1st Boot Device	1st FLOPPY DRIVE	
2nd Boot Device	HDD:3M-ST3200827A	
3rd Boot Device	CD/DVD:3S-PIONEER D	
▶ Hard Disk Drives	Press Enter	
▶ Removable Drives	Press Enter	
▶ CD/DVD Drives	Press Enter	
Boot Other Device	Enabled	
Case Open Warning	Disabled	

↑↓ → ←: Move Enter: Select +/-: Value F10: Save and Exit
F1: General Help F9: Optimized Defaults ESC: Exit

CPU TM function (Enabled)
For some specific brands of CPU, you can use this item to control the CPU frequency and voltage according to its temperature.

Max CPUID Value Limit (Disabled)
Use this item to enable or disable the Max CPU ID value limit. When supports Prescott and LGA775 CPUs, enables this to prevent the system from “rebooting” when trying to install Windows NT 4.0.

Execute Disable Bit (Enabled)
This item is a security feature that helps you protect your CPU and operating system against malicious software executing code. This item is available when CPU supports the feature.

Quick Power on Self Test (Enabled)
Enable this item to shorten the power on testing (POST) and have your system start up faster. You might like to enable this item after you are confident that your system hardware is operating smoothly.

Boot Up Numlock Status (On)
This item defines if the keyboard Num Lock key is active when your system is started.

APIC Mode (Enabled)
This item allows you to enable or disable the APCI (Advanced Programmable Interrupt Controller) mode. APIC provides symmetric multi-processing (SMP) for systems, allowing support for up to 60 processors.

1st/2nd/3rd Boot Device (1st FLOPPY DRIVE/HDD:3M-ST3200827A/CD/DVD:3S-POINEER D)
Use this item to determine the device order the computer used to look for an operating system to load at start-up time. The devices showed here will be different depending on the exact devices installed on your motherboard.

Using BIOS

► Hard Disk Drives (Press Enter)

Scroll to this item and press <Enter> to view the following screen:

CMOS Setup Utility - Copyright (C) 1985-2005, American Megatrends, Inc.
Hard Disk Drives

Hard Disk Drives		Help Item
1st Drive	HDD:3M-ST3200827A	Specifies the boot sequence from the available devices.

↑↓ → ←: Move Enter: Select +/-: Value F10: Save and Exit
F1: General Help F9: Optimized Defaults ESC: Exit

Press <Esc> to return to the Advanced Setup page.

► Removable Drives (Press Enter)

Scroll to this item and press <Enter> to view the following screen:

CMOS Setup Utility - Copyright (C) 1985-2005, American Megatrends, Inc.
Removable Drives

Removable Drives		Help Item
1st Drive	1st FLOPPY DRIVE	Specifies the boot sequence from the available devices.

↑↓ → ←: Move Enter: Select +/-: Value F10: Save and Exit
F1: General Help F9: Optimized Defaults ESC: Exit

Press <Esc> to return to the Advanced Setup page.

► CD/DVD Drives (Press Enter)

Scroll to this item and press <Enter> to view the following screen:

CMOS Setup Utility - Copyright (C) 1985-2005, American Megatrends, Inc.
CD/DVD Drives

CD/DVD Drives		Help Item
1st Drive	CD/DVD:3S-POINEER D	Specifies the boot sequence from the available devices.

↑↓ → ←: Move Enter: Select +/-: Value F10: Save and Exit
F1: General Help F9: Optimized Defaults ESC: Exit

Using BIOS

Press <Esc> to return to the Advanced Setup page.

Boot Other Device (Enabled)

When enabled, the system searches all other possible locations for an operating system if it fails to find one in the devices specified under the First, Second and Third boot devices.

Case Open Warning (Disabled)

This item enables or disables the warning if the case is opened up, and the item below indicates the current status of the case.

Press <Esc> to return to the main menu setting page.

Advanced Chipset Setup

This page sets up more advanced information about your system. Handle this page with caution. Any changes can affect the operation of your computer.

CMOS Setup Utility - Copyright (C) 1985-2005, American Megatrends, Inc.
Advanced Chipset Setup

Configure DRAM Timing	By SPD	Help Item
Aperture Size Select	128MB	
Share Memory Size	Enabled, 8MB	
		Options
		Disabled
		By SPD

↑↓ → ←: Move Enter: Select +/-: Value F10: Save and Exit
F1: General Help F9: Optimized Defaults ESC: Exit

Configure DRAM Timing (By SPD)

When this item is set to enable, the DDR timing is configured using SPD. SPD (Serial Presence Detect) is located on the memory modules, BIOS reads information coded in SPD during system boot up.

Aperture Size Select (128MB)

This item defines the size of the aperture if you use an AGP graphics adapter. The AGP aperture refers to a section of the PCI memory address range used for graphics memory that you leave this item at the default value.

Share Memory Size (Enabled, 8MB)

This item lets you allocate a portion of the main memory for the onboard VGA display application.

Press <Esc> to return to the main menu setting page.

Using BIOS

Integrated Peripherals

This page sets up some parameters for peripheral devices connected to the system.

CMOS Setup Utility - Copyright (C) 1985-2005, American Megatrends, Inc.
Integrated Peripherals

Onboard IDE Controller	Enabled	Help Item
Onboard PCI S-ATA Controller	IDE	DISABLED: disables the integrated IDE Controller. ENABLED: enables only the Primary IDE Controller.
USB Functions	Enabled	
Legacy USB Support	Enabled	
Audio Controller	Enabled	
Onboard LAN Function	Enabled	
Onboard LAN Boot ROM	Disabled	
Serial Port1 Address	2F8&IRQ3	
Serial Port2 Address	3F8&IRQ4	
Serial Port2 Mode	Normal	
Parallel Port Address	378	
Parallel Port Mode	EPP+ECP	
ECP Mode DMA Channel	DMA3	
Parallel Port IRQ	IRQ7	

↑↓ → ←: Move Enter: Select +/-: Value F10: Save and Exit
F1: General Help F9: Optimized Defaults ESC: Exit

Onboard IDE Controller (Enabled)

Use this item to enable or disable the onboard IDE interface.

Onboard PCI S-ATA Controller (IDE)

Use this item to enable or disable the onboard PCI SATA controller.

USB Functions (Enabled)

Use this item to enable or disable the USB function.

Legacy USB Support (Enabled)

Use this item to enable or disable support for legacy USB devices. Setting to Auto allows the system to detect the presence of USB device at startup. If detected, the USB controller legacy mode is enabled. If no USB device is detected, the legacy USB support is disabled.

Audio Controller (Enabled)

Use this item to enable or disable the onboard audio controller.

OnBoard LAN Function (Enabled)

Use this item to enable or disable the onboard LAN function.

OnBoard LAN Boot ROM (Disabled)

Use this item to enable or disable the booting from the onboard LAN or a network add-in card with a remote boot ROM installed.

Serial Port1/2 Address (2F8&IRQ3/3F8&IRQ4)

Use this item to enable or disable the onboard COM1/2 serial port, and to assign a port address.

Serial Port2 Mode (Normal)

If Serial Port 2 Address is not disabled, it allows you to set the Serial Port 2 Mode.

Parallel Port Address (378)

Use this item to enable or disable the onboard Parallel port, and to assign a port address.

Using BIOS

Parallel Port Mode (EPP+ECP)

Use this item to select the parallel port mode. You can select Normal (Standard Parallel Port), ECP (Extended Capabilities Port), EPP (Enhanced Parallel Port), or BPP (Bi-Directional Parallel Port).

ECP Mode DMA Channel (DMA3)

Use this item to assign the DMA Channel under ECP Mode function.

Parallel Port IRQ (IRQ7)

Use this item to assign IRQ to the parallel port.

Press <Esc> to return to the main menu setting page.

Power Management Setup

This page sets up some parameters for system power management operation.

CMOS Setup Utility - Copyright (C) 1985-2005, American Megatrends, Inc.
Power Management Setup

ACPI Suspend Type	S3 (STR)	Help Item
Soft-off by PWR-BTTN	Delay 4 Sec	Select the ACPI state used for System Suspend.
PWRON After PWR-Fail	Power Off	
Resume On LAN	Disabled	
Wake-Up by PME	Enabled	
Power On by Ring	Disabled	
USB Device Wakeup From S3	Enabled	
PS2 Keyboard Wakeup	Disabled	
PS2 Mouse Wakeup	Disabled	
Resume on RTC Alarm	Disabled	

↑↓ → ← : Move Enter : Select +/- : Value F10: Save and Exit
F1: General Help F9: Optimized Defaults ESC: Exit

ACPI Suspend Type (S3(STR))

Use this item to define how your system suspends. In the default, S3, the suspend mode is a suspend to RAM, i.e, the system shuts down with the exception of a refresh current to the system memory.

Soft-Off By PWR-BTTN (Delay 4 Sec)

Under ACPI (Advanced Configuration and Power management Interface) you can create a software power down. In a software power down, the system can be resumed by Wake Up Alarms. This item lets you install a software power down that is controlled by the power button on your system. If the item is set to Instant-Off, then the power button causes a software power down. If the item is set to Delay 4 Sec, then you have to hold the power button down for four seconds to cause a software power down.

PWRON After PWR-Fail (Power Off)

This item enables your computer to automatically restart or return to its operating status.

Resume On LAN (Disabled)

This item allows users to enable or disable LAN activity to wake up the system from a power saving mode.

Wake-Up by PME (Enabled)

The system can be turned off with a software command. If you enable this item, the system can automatically resume if there is an incoming call on the PCI Modem or PCI LAN card. You must use an ATX power supply in order to use this feature. Use this item to do wake-up action if inserting the PCI card.

Power On by Ring (Disabled)

The system can be turned off with a software command. If you enable this item, the system can automatically resume if there is an incoming call on the Modem. You must use an ATX power supply in order to use this feature.

USB Device Wakeup from S3 (Enabled)

This item allows you to enable/disable the USB device wakeup function from S3/S4 mode.

PS2 Keyboard Wakeup (Disabled)

This item enable or disable you to allow keyboard activity to awaken the system from power saving mode.

PS2 Mouse Wakeup (Disabled)

This item enable or disable you to allow mouse activity to awaken the system from power saving mode.

Resume on RTC Alarm (Disabled)

The system can be turned off with a software command. If you enable this item, the system can automatically resume at a fixed time based on the system's RTC (realtime clock). Use the items below this one to set the date and time of the wake-up alarm. You must use an ATX power supply in order to use this feature.

Press <Esc> to return to the main menu setting page.

PCI / PnP Configuration

This page sets up some parameters for devices installed on the PCI bus and those utilizing the system plug and play capability.

CMOS Setup Utility - Copyright (C) 1985-2005, American Megatrends, Inc.
PCI / PnP Configuration

Init Display First	PCI Express Card	Help Item
Allocate IRQ to PCI VGA	Yes	Select which graphics controller to use as the primary boot device.

↑↓ → ←: Move Enter: Select +/-: Value F10: Save and Exit
F1: General Help F9: Optimized Defaults ESC: Exit

Init Display First (PCI Express Card)

Use this item to select which graphics controller to use as the primary boot devices.

Allocate IRQ to PCI VGA (Yes)

If this item is enabled, an IRQ will be assigned to the PCI VGA graphics system. You set this value to No to free up an IRQ.

Press <Esc> to return to the main menu setting page.

PC Health Status

On motherboards support hardware monitoring, this item lets you monitor the parameters for critical voltages, temperatures and fan speeds.

CMOS Setup Utility - Copyright (C) 1985-2005, American Megatrends, Inc.
PC Health Status

Hardware Health Event Monitoring		Help Item
►Smart Fan Function	Press Enter	While entering setup, BIOS auto detects the presence of IDE devices. This displays the status of auto detection of IDE devices.
Shutdown Temperature	Disabled	
CPU Temperature	45°C/113°F	
System Temperature	32°C/89°F	
CPU Fan Speed	2647 RPM	
System Fan Speed	N/A	

↑↓ → ←: Move Enter: Select +/-: Value F10: Save and Exit
F1: General Help F9: Optimized Defaults ESC: Exit

►Smart Fan Function

Scroll to this item and press <Enter> to view the following screen:

CMOS Setup Utility - Copyright (C) 1985-2005, American Megatrends, Inc.
Smart Fan Function

SMART Fan Control	Item Help
Disabled	Fan configuration mode setting

↑↓ → ←: Move Enter: Select +/-: Value F10: Save and Exit
F1: General Help F9: Optimized Defaults ESC: Exit

SMART Fan Control (Disabled)

This item allows you to enable/disable the control of the system fan speed by changing the fan voltage.

Press <Esc> to return to the PC Health Status page.

Using BIOS

Shutdown Temperature (Disabled)

Enable you to set the maximum temperature the system can reach before powering down.

System Component Characteristics

These items display the monitoring of the overall inboard hardware health events, such as System & CPU temperature, CPU & DIMM voltage, CPU & system fan speed,...etc.

- CPU Temperature
- System Temperature
- CPU/System Fan Speed

Press <Esc> to return to the main menu setting page.

Frequency/Voltage Control

This page enables you to set the clock speed and system bus for your system. The clock speed and system bus are determined by the kind of processor you have installed in your system.

CMOS Setup Utility - Copyright (C) 1985-2005, American Megatrends, Inc.
Frequency/Voltage Control

Manufacturer : Intel		Help item
Ratio Status : Unlocked (Max: 27, Min: 12)		
Ratio Actual Value: 27		
Auto Detect CPU Frequency	Disabled	Options
DRAM Frequency	Auto	Disabled
Spread Spectrum	Enabled	Enabled

↑↓ → ← : Move Enter : Select +/- : Value F10: Save and Exit
F1: General Help F9: Optimized Defaults ESC: Exit

Manufacturer

This item displays the information of current manufacturer of the CPU installed in your computer.

Ratio Status/Ratio Actual Value

These items show the locked ratio status and the actual ratio of the CPU installed in your system.

Auto Detect CPU Frequency (Disabled)

This item enables or disables the auto detect CPU frequency.

DRAM Frequency (Auto)

This item shows the frequency of the DRAM in your computer.

Spread Spectrum (Enabled)

If you enable spread spectrum, it can significantly reduce the EMI (Electro-Magnetic Interference) generated by the system.

Press <Esc> to return to the main menu setting page.

Load Optimal Defaults

This option opens a dialog box that lets you install optimized defaults for all appropriate items in the Setup Utility. Press <Y> and then <Enter> to install the defaults. Press <N> and then <Enter> to not install the defaults. The optimized defaults place demands on the system that may be greater than the performance level of the components, such as the CPU and the memory. You can cause fatal errors or instability if you install the optimized defaults when your hardware does not support them. If you only want to install setup defaults for a specific option, select and display that option, and then press <F7>.

Supervisor Password

This page helps you install or change a password.
CMOS Setup Utility - Copyright (C) 1985-2005, American Megatrends, Inc.
Supervisor Password

Security Settings		Help item
Supervisor Password	:Not Installed	Install or Change the password.
Change Supervisor Password	Press Enter	

↑↓ → ←: Move Enter: Select +/-: Value F10: Save and Exit
F1: General Help F9: Optimized Defaults ESC: Exit

Supervisor Password (Not Installed)

This item indicates whether a supervisor password has been set. If the password has been installed, *Installed* displays. If not, *Not Installed* displays.

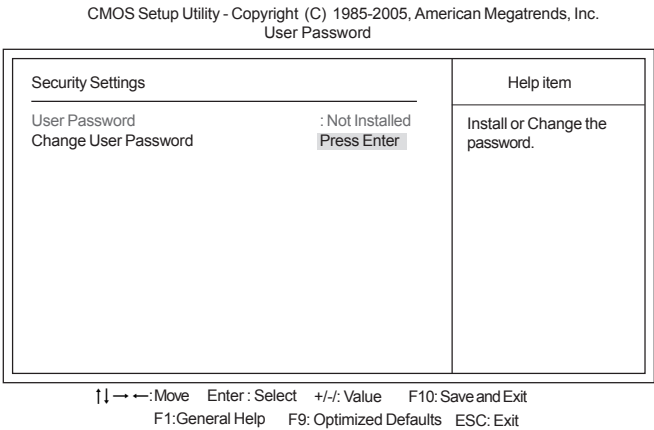
Change Supervisor Password (Press Enter)

You can select this option and press <Enter> to access the sub menu. You can use the sub menu to change the supervisor password.

Press <Esc> to return to the main menu setting page.

User Password

This page helps you install or change a password.



User Password (Not Installed)

This item indicates whether a user password has been set. If the password has been installed, *Installed* displays. If not, *Not Installed* displays.

Change User Password (Press Enter)

You can select this option and press <Enter> to access the sub menu. You can use the sub menu to change the supervisor password.


Press <Esc> to return to the main menu setting page.

Save & Exit Setup

Highlight this item and press <Enter> to save the changes that you have made in the Setup Utility and exit the Setup Utility. When the Save and Exit dialog box appears, select [OK] to save and exit, or select [Cancel] to return to the main menu.

Exit Without Saving

Highlight this item and press <Enter> to discard any changes that you have made in the Setup Utility and exit the Setup Utility. When the Exit Without Saving dialog box appears, select [OK] to discard changes and exit, or select [Cancel] to return to the main menu.

 If you have made settings that you do not want to save, use the “Discard Changes and Exit” item and select [OK] to discard any changes you have made.

This concludes Chapter 3. Refer to the next chapter for information on the software supplied with the motherboard.

Using BIOS

Chapter 4

Using the Motherboard Software

About the Software CD-ROM

The support software CD-ROM that is included in the motherboard package contains all the drivers and utility programs needed to properly run the bundled products. Below you can find a brief description of each software program, and the location for your motherboard version. More information on some programs is available in a README file, located in the same directory as the software. Before installing any software, always inspect the folder for files named README.TXT, INSTALL.TXT, or something similar. These files may contain important information that is not included in this manual.



1. Never try to install all software from folder that is not specified for use with your motherboard.
2. The notice of Intel HD audio installation (optional): The Intel High Definition audio functionality unexpectedly quits working in Windows Server 2003 Service Pack 1 or Windows XP Professional x64 Edition. Users need to download and install the update packages from the Microsoft Download Center "before" installing HD audio driver bundled in the Driver CD. Please log on to <http://support.microsoft.com/default.aspx?scid=kb;en-us;901105#appliesto> for more information.

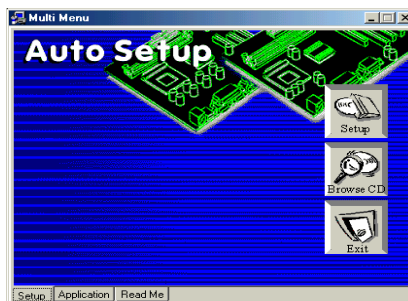
Auto-installing under Windows 2000/XP

The Auto-install CD-ROM makes it easy for you to install the drivers and software for your motherboard.



If the Auto-install CD-ROM does not work on your system, you can still install drivers through the file manager for your OS (for example, Windows Explorer). Refer to the Utility Folder Installation Notes later in this chapter.

The support software CD-ROM disc loads automatically under Windows 2000/XP. When you insert the CD-ROM disc in the CD-ROM drive, the autorun feature will automatically bring up the install screen. The screen has three buttons on it, Setup, Browse CD and Exit.



If the opening screen does not appear; double-click the file "setup.exe" in the root directory.

Using the Motherboard Software

Setup Tab

Setup	Click the Setup button to run the software installation program. Select from the menu which software you want to install.
Browse CD	<p>The Browse CD button is the standard Windows command that allows you to open Windows Explorer and show the contents of the support CD.</p> <p>Before installing the software from Windows Explorer, look for a file named README.TXT, INSTALL.TXT or something similar. This file may contain important information to help you install the software correctly.</p> <p>Some software is installed in separate folders for different operating systems, such as Windows 2000/XP. Always go to the correct folder for the kind of OS you are using.</p> <p>In install the software, execute a file named SETUP.EXE or INSTALL.EXE by double-clicking the file and then following the instructions on the screen.</p>
Exit	The EXIT button closes the Auto Setup window.

Application Tab

Lists the software utilities that are available on the CD.

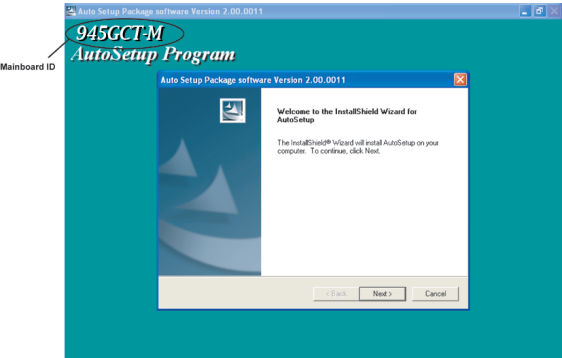
Read Me Tab


Displays the path for all software and drivers available on the CD.

Running Setup

Follow these instructions to install device drivers and software for the motherboard:

1. Click **Setup**. The installation program begins:

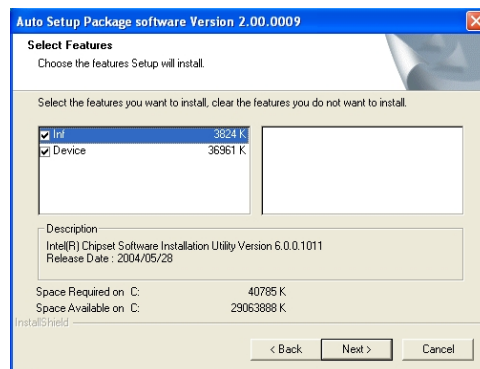


 The following screens are examples only. The screens and driver lists will be different according to the motherboard you are installing.

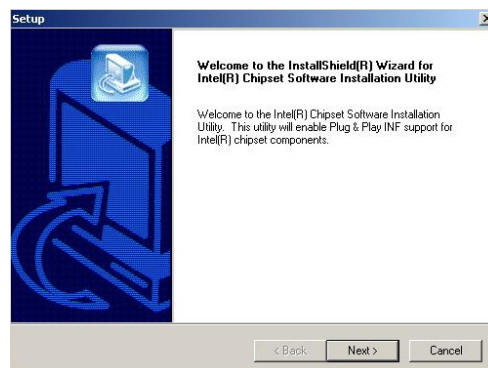
The motherboard identification is located in the upper left-hand corner.

Using the Motherboard Software

2. Click **Next**. The following screen appears:



3. Check the box next to the items you want to install. The default options are recommended.
4. Click **Next** run the Installation Wizard. An item installation screen appears:



5. Follow the instructions on the screen to install the items.

Drivers and software are automatically installed in sequence. Follow the onscreen instructions, confirm commands and allow the computer to restart a few times to complete the installation.

Using the Motherboard Software

Manual Installation

Insert the CD in the CD-ROM drive and locate the PATH.DOC file in the root directory. This file contains the information needed to locate the drivers for your motherboard.

Look for the chipset and motherboard model; then browse to the directory and path to begin installing the drivers. Most drivers have a setup program (SETUP.EXE) that automatically detects your operating system before installation. Other drivers have the setup program located in the operating system subfolder.

If the driver you want to install does not have a setup program, browse to the operating system subfolder and locate the readme text file (README.TXT or README.DOC) for information on installing the driver or software for your operating system.

Utility Software Reference

All the utility software available from this page is Windows compliant. They are provided only for the convenience of the customer. The following software is furnished under license and may only be used or copied in accordance with the terms of the license.



These software(s) are subject to change at anytime without prior notice. Please refer to the support CD for available software.

This concludes Chapter 4.

Using the Motherboard Software